

SSK TOOLING SYSTEM

# FACE MILL ARBOR

- AUFNAHMEDORN FÜR MESSERKÖPFE
- ARBRE PORTE FRAISE À ALÉSAGE
- MANDRINO PORTA FRESE FRONTALE
- EJE PARA PLATOS DE PLACAS

CBT (BT DUAL CONTACT)

FMA

JIS B6339/MAS 403-BT

FMA

DIN 69893/ISO 12164-1-HSK

FMA

ANSI B5.18-NT

FMA

DIN 228-MTA

CBT (BT DUAL CONTACT)

FMB / FMC

JIS B6339/MAS 403-BT

FMB / FMC

DIN 69893/ISO 12164-1-HSK

FMC

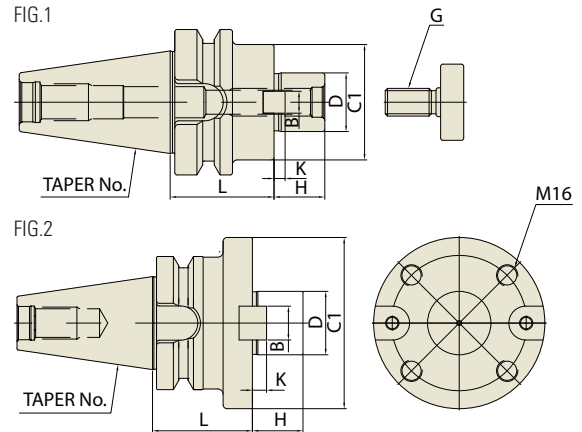


# FACE MILL ARBOR

SSK Supreme

FMA

AUFNAHMEDORN FÜR MESSERKÖPFE  
ARBRE PORTE FRAISE À ALÉSAGE  
MANDRINO PORTA FRESE FRONTALE  
EJE PARA PLATOS DE PLACAS



CBT	Taper Accuracy AT3	G Value 2.5	RPM 25,000	Coolant System A
-----	-----------------------	----------------	---------------	---------------------

## ■ CBT (BT DUAL CONTACT)

Unit : mm

TAPER No.	MODEL No.	D	L	C1	H	B	K	G	FIG.	WEIGHT (Kg)
30	CBT30-FMA25.4-45	25.4	45	50	22	9.5	5	M12	1	1.10
	CBT30-FMA31.75-45	31.75	45	60	30	12.7	7	M16	1	1.20
40	CBT40-FMA25.4-45	25.4	45	50	22	9.5	5	M12	1	1.50
	CBT40-FMA25.4-90	25.4	90	50	22	9.5	5	M12	1	3.10
	CBT40-FMA31.75-45	31.75	45	60	30	12.7	7	M16	1	1.90
	CBT40-FMA31.75-75	31.75	75	60	30	12.7	7	M16	1	2.70
	CBT40-FMA38.1-60	38.1	60	80	34	15.9	9	M20	1	2.90
50	CBT50-FMA25.4-45	25.4	45	50	22	9.5	5	M12	1	3.70
	CBT50-FMA25.4-90	25.4	90	50	22	9.5	5	M12	1	4.60
	CBT50-FMA25.4-150	25.4	150	50	22	9.5	5	M12	1	5.50
	CBT50-FMA31.75-45	31.75	45	60	30	12.7	7	M16	1	4.50
	CBT50-FMA31.75-75	31.75	75	60	30	12.7	7	M16	1	5.30
	CBT50-FMA31.75-105	31.75	105	60	30	12.7	7	M16	1	5.80
	CBT50-FMA31.75-150	31.75	150	60	30	12.7	7	M16	1	6.30
	CBT50-FMA38.1-45	38.1	45	80	34	15.9	9	M20	1	4.30
	CBT50-FMA38.1-75	38.1	75	80	34	15.9	9	M20	1	5.60
	CBT50-FMA38.1-105	38.1	105	80	34	15.9	9	M20	1	6.00
	CBT50-FMA38.1-150	38.1	150	80	34	15.9	9	M20	1	6.50
	CBT50-FMA50.8-45	50.8	45	100	36	19.05	10	M24	1	4.90
CBT50-FMA50.8-75	50.8	75	100	36	19.05	10	M24	1	6.80	
CBT50-FMA47.625-75	47.625	75	128.57	38	25.4	12.5	-	2	7.70	

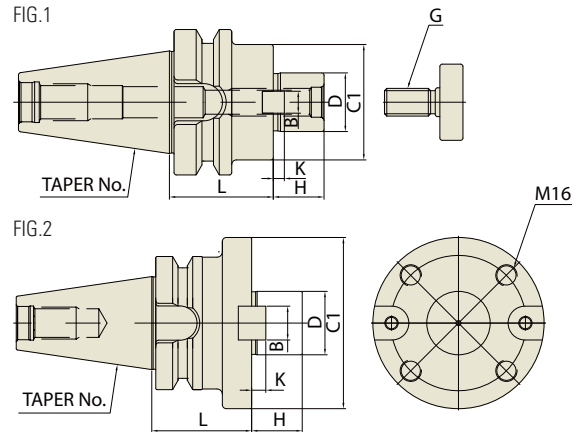
- ▶ Through coolant system is optional.
- ▶ For parts, please refer to page 207.

# FACE MILL ARBOR

SSK POP

FMA

AUFNAHMEDORN FÜR MESSERKÖPFE  
ARBRE PORTE FRAISE À ALÉSAGE  
MANDRINO PORTA FRESE FRONTALE  
EJE PARA PLATOS DE PLACAS



JIS B6339 -BT	Taper Accuracy AT3	G Value 6.3	RPM 15,000	Coolant System A
------------------	--------------------------	----------------	---------------	------------------------

## ■ JIS B6339/MAS 403-BT

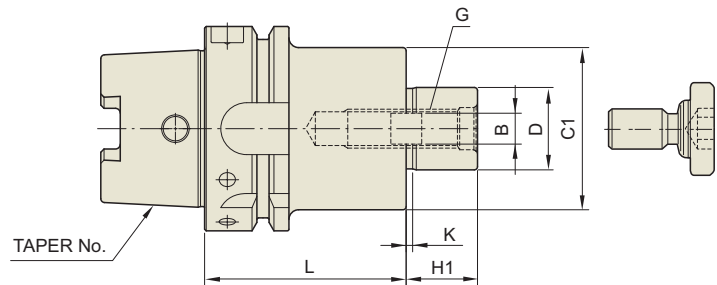
Unit : mm

TAPER No.	MODEL No.	D	L	C1	H	B	K	G	FIG.	WEIGHT (Kg)
30	BT30-FMA25.4-45	25.4	45	50	22	9.5	5	M12	1	1.10
	BT30-FMA31.75-45	31.75	45	60	30	12.7	7	M16	1	1.20
40	BT40-FMA25.4-45	25.4	45	50	22	9.5	5	M12	1	1.50
	BT40-FMA25.4-90	25.4	90	50	22	9.5	5	M12	1	3.10
	BT40-FMA31.75-45	31.75	45	60	30	12.7	7	M16	1	1.90
	BT40-FMA31.75-75	31.75	75	60	30	12.7	7	M16	1	2.70
	BT40-FMA38.1-60	38.1	60	80	34	15.9	9	M20	1	2.90
	BT50-FMA25.4-45	25.4	45	50	22	9.5	5	M12	1	3.70
50	BT50-FMA25.4-90	25.4	90	50	22	9.5	5	M12	1	4.60
	BT50-FMA25.4-150	25.4	150	50	22	9.5	5	M12	1	5.50
	BT50-FMA31.75-45	31.75	45	60	30	12.7	7	M16	1	4.50
	BT50-FMA31.75-75	31.75	75	60	30	12.7	7	M16	1	5.30
	BT50-FMA31.75-105	31.75	105	60	30	12.7	7	M16	1	5.80
	BT50-FMA31.75-150	31.75	150	60	30	12.7	7	M16	1	6.30
	BT50-FMA38.1-45	38.1	45	80	34	15.9	9	M20	1	4.30
	BT50-FMA38.1-75	38.1	75	80	34	15.9	9	M20	1	5.60
	BT50-FMA38.1-105	38.1	105	80	34	15.9	9	M20	1	6.00
	BT50-FMA38.1-150	38.1	150	80	34	15.9	9	M20	1	6.50
50	BT50-FMA50.8-45	50.8	45	100	36	19.05	10	M24	1	4.90
	BT50-FMA50.8-75	50.8	75	100	36	19.05	10	M24	1	6.80
	BT50-FMA47.625-75	47.625	75	128.57	38	25.4	12.5	-	2	7.70

- ▶ Through coolant system is optional.
- ▶ CAT(ANSI B5.50) taper and Inch type products are available.
- ▶ For parts, please refer to page 207.

## FACE MILL ARBOR

AUFNAHMEDORN FÜR MESSERKÖPFE  
ARBRE PORTE FRAISE À ALÉSAGE  
MANDRINO PORTA FRESE FRONTALE  
EJE PARA PLATOS DE PLACAS

DIN 69893  
- HSKTaper  
Accuracy  
-G Value  
6.3RPM  
15,000Coolant  
System  
A

### ■ DIN 69893/ISO 12164-1-HSK FORM A

Unit : mm

TAPER No.	MODEL No.	D	C1	L	H1	B	K	G	WEIGHT (Kg)
40A	HSK40A-FMA25.4-50	25.4	50	50	22	9.5	5	M12	
50A	HSK50A-FMA25.4-60	25.4	50	60	22	9.5	5	M12	
63A	HSK63A-FMA25.4-45	25.4	50	45	22	9.5	5	M12	
	HSK63A-FMA31.75-50	31.75	60	50	30	12.7	7	M16	
100A	HSK100A-FMA25.4-45	25.4	50	45	22	9.5	5	M12	
	HSK100A-FMA31.75-50	31.75	60	50	30	12.7	7	M16	
	HSK100A-FMA38.1-55	38.1	80	55	34	15.9	9	M20	
	HSK100A-FMA50.8-60	50.8	100	60	36	19.05	10	M24	

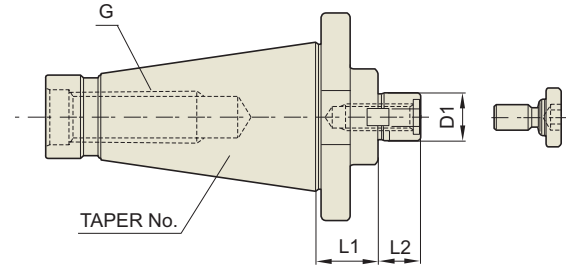
- ▶ Through coolant system is optional.
- ▶ For parts, please refer to page 207.

# FACE MILL ARBOR

SSK **POP**

**FMA**

AUFNAHMEDORN FÜR MESSERKÖPFE  
ARBRE PORTE FRAISE À ALÉSAGE  
MANDRINO PORTA FRESE FRONTALE  
EJE PARA PLATOS DE PLACAS

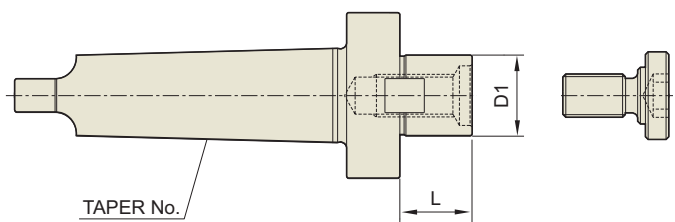


## ■ ANSI B5.18-NT

DIN 2080 -NT	Taper Accuracy AT3	G Value -	RPM -	Coolant System A
-----------------	--------------------------	--------------	----------	------------------------

Unit : mm

TAPER No.	MODEL No.	CUTTER (Ø)	D1	L1	L2	DRAW THREAD	OLD MODEL No.	WEIGHT (Kg)
40	NT40-FMA25.4	3"(75)	25.4	30	22	U5/8-11(M16×2)	NT40-3R	1.45
	NT40-FMA31.75	4"(100)	31.75	30	30	U5/8-11(M16×2)	NT40-4R	1.75
	NT40-FMA38.1	5"(125)	38.1	30	34	U5/8-11(M16×2)	NT40-5R	1.93
	NT40-FMA50.8	6"(150)	50.8	30	36	U5/8-11(M16×2)	NT40-6R	2.55
50	NT50-FMA25.4	3"(75)	25.4	30	22	U1-8(M24×3)	NT50-3R	3.30
	NT50-FMA31.75	4"(100)	31.75	30	30	U1-8(M24×3)	NT50-4R	3.40
	NT50-FMA38.1	5"(125)	38.1	30	34	U1-8(M24×3)	NT50-5R	3.60
	NT50-FMA50.8	6"(150)	50.8	30	36	U1-8(M24×3)	NT50-6R	3.90
	NT50-FMA47.625	8"(200)	47.625	45	38	U1-8(M24×3)	NT50-8R	4.90



## ■ DIN 228-MTA

Unit : mm

TAPER No.	MODEL No.	CUTTER (Ø)	D1	L	WEIGHT (Kg)
5	MTA5-FMA25.4	3"(75)	25.4	22	1.60
	MTA5-FMA31.75	4"(100)	31.75	30	1.90
	MTA5-FMA38.1	5"(125)	38.1	34	2.20
6	MTA6-FMA25.4	3"(75)	25.4	22	3.50
	MTA6-FMA31.75	4"(100)	31.75	30	3.80
	MTA6-FMA38.1	5"(125)	38.1	34	4.10
	MTA6-FMA50.8	6"(150)	50.8	36	4.60
	MTA6-FMA47.625	8"(200)	47.625	38	5.40

► For parts, please refer to page 207.

# FACE MILL ARBOR

SSK Supreme

FMB

AUFNAHMEDORN FÜR MESSERKÖPFE  
ARBRE PORTE FRAISE À ALÉSAGE  
MANDRINO PORTA FRESE FRONTALE  
EJE PARA PLATOS DE PLACAS



FIG.1

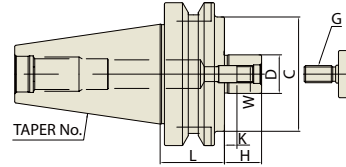


FIG.2

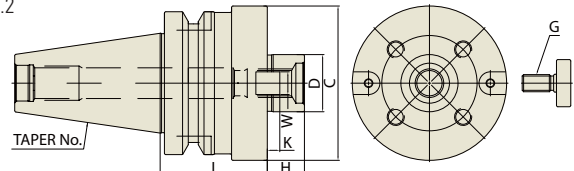
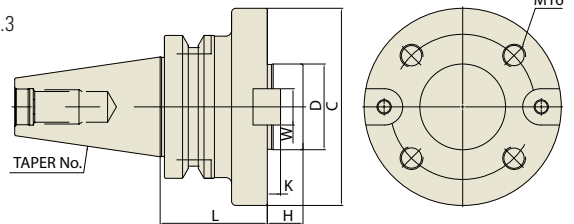


FIG.3



CBT	Taper Accuracy AT3	G Value 2.5	RPM 25,000	Coolant System A
-----	-----------------------	----------------	---------------	---------------------

## ■ CBT (BT DUAL CONTACT)

### ◆ METRIC TYPE

Unit : mm

TAPER No.	MODEL No.	D	L	C	H	W	K	G	FIG.	WEIGHT (Kg)
30	CBT30-FMB27-45	27	45	80	26	12	6	M12	1	2.10
40	CBT40-FMB27-60	27	60	80	26	12	6	M12	1	2.50
	CBT40-FMB27-90	27	90	80	26	12	6	M12	1	4.70
40	CBT40-FMB40-60	40	60	85	26	16	8.5	M20	1	7.40
	CBT50-FMB27-45	27	45	80	26	12	6	M12	1	4.00
50	CBT50-FMB27-90	27	90	80	26	12	6	M12	1	5.80
	CBT50-FMB27-150	27	150	80	26	12	6	M12	1	8.20
50	CBT50-FMB40-45	40	45	85	26	16	8.5	M20	1	4.70
	CBT50-FMB40-75	40	75	85	26	16	8.5	M20	1	6.10
50	CBT50-FMB40-105	40	105	85	26	16	8.5	M20	1	8.10
	CBT50-FMB40F-75	40	75	110	26	16	8.5	M20	2	6.60
50	CBT50-FMB60-75	60	75	140	25	25.4	12.5	-	3	7.90

### ◆ INCH TYPE

Unit : mm

TAPER No.	MODEL No.	D	L	C	H	W	K	G	FIG.	WEIGHT (Kg)
30	CBT30-FMB25.4-45	25.4	45	80	26	9.5	5	M12	1	2.10
40	CBT40-FMB25.4-60	25.4	60	80	26	9.5	5	M12	1	2.50
	CBT40-FMB25.4-90	25.4	90	80	26	9.5	5	M12	1	4.70
40	CBT40-FMB38.1-60	38.1	60	85	26	15.9	9	M20	1	7.40
	CBT50-FMB25.4-45	25.4	45	80	26	9.5	5	M12	1	4.00
50	CBT50-FMB25.4-90	25.4	90	80	26	9.5	5	M12	1	5.80
	CBT50-FMB25.4-150	25.4	150	80	26	9.5	5	M12	1	8.20
50	CBT50-FMB38.1-45	38.1	45	85	26	15.9	9	M20	1	4.70
	CBT50-FMB38.1-75	38.1	75	85	26	15.9	9	M20	1	6.10
50	CBT50-FMB38.1-105	38.1	105	85	26	15.9	9	M20	1	8.70
	CBT50-FMB38.F-75	38.1	75	110	26	15.9	9	M20	2	6.60

▶ Through coolant system is optional.

▶ For parts, please refer to page 207.

# FACE MILL ARBOR

SSK POP

FMB

AUFNAHMEDORN FÜR MESSERKÖPFE  
ARBRE PORTE FRAISE À ALÉSAGE  
MANDRINO PORTA FRESE FRONTALE  
EJE PARA PLATOS DE PLACAS



FIG.1

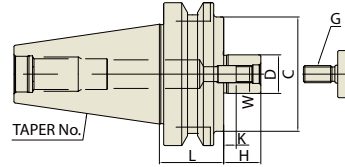


FIG.2

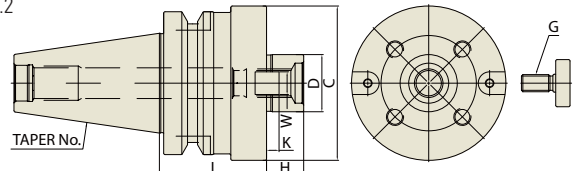
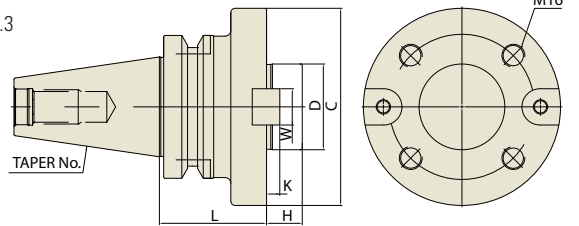


FIG.3



JIS B6339  
-BT

Taper  
Accuracy  
AT3

G Value  
6.3

RPM  
15,000

Coolant  
System  
A

## ■ JIS B6339/MAS 403-BT

### ◆ METRIC TYPE

Unit : mm

TAPER No.	MODEL No.	D	L	C	H	W	K	G	FIG.	WEIGHT (Kg)
30	BT30-FMB27-45	27	45	80	26	12	6	M12	1	2.10
	BT40-FMB27-60	27	60	80	26	12	6	M12	1	2.50
40	BT40-FMB27-90	27	90	80	26	12	6	M12	1	4.70
	BT40-FMB40-60	40	60	85	26	16	8.5	M20	1	7.40
50	BT50-FMB27-45	27	45	80	26	12	6	M12	1	4.00
	BT50-FMB27-90	27	90	80	26	12	6	M12	1	5.80
	BT50-FMB27-150	27	150	80	26	12	6	M12	1	8.20
	BT50-FMB40-45	40	45	85	26	16	8.5	M20	1	4.70
	BT50-FMB40-75	40	75	85	26	16	8.5	M20	1	6.10
	BT50-FMB40-105	40	105	85	26	16	8.5	M20	1	8.10
	BT50-FMB40F-75	40	75	110	26	16	8.5	M20	2	6.60
	BT50-FMB60-75	60	75	140	25	25.4	12.5	-	3	7.90

### ◆ INCH TYPE

Unit : mm

TAPER No.	MODEL No.	D	L	C	H	W	K	G	FIG.	WEIGHT (Kg)
30	BT30-FMB25.4-45	25.4	45	80	26	9.5	5	M12	1	2.10
	BT40-FMB25.4-60	25.4	60	80	26	9.5	5	M12	1	2.50
40	BT40-FMB25.4-90	25.4	90	80	26	9.5	5	M12	1	4.70
	BT40-FMB38.1-60	38.1	60	85	26	15.9	9	M20	1	7.40
50	BT50-FMB25.4-45	25.4	45	80	26	9.5	5	M12	1	4.00
	BT50-FMB25.4-90	25.4	90	80	26	9.5	5	M12	1	5.80
	BT50-FMB25.4-150	25.4	150	80	26	9.5	5	M12	1	8.20
	BT50-FMB38.1-45	38.1	45	85	26	15.9	9	M20	1	4.70
	BT50-FMB38.1-75	38.1	75	85	26	15.9	9	M20	1	6.10
	BT50-FMB38.1-105	38.1	105	85	26	15.9	9	M20	1	8.70
	BT50-FMB38.F-75	38.1	75	110	26	15.9	9	M20	2	6.60

- ▶ Through coolant system is optional.
- ▶ CAT(ANSI B5.50) taper and Inch type products are available.
- ▶ For parts, please refer to page 207.

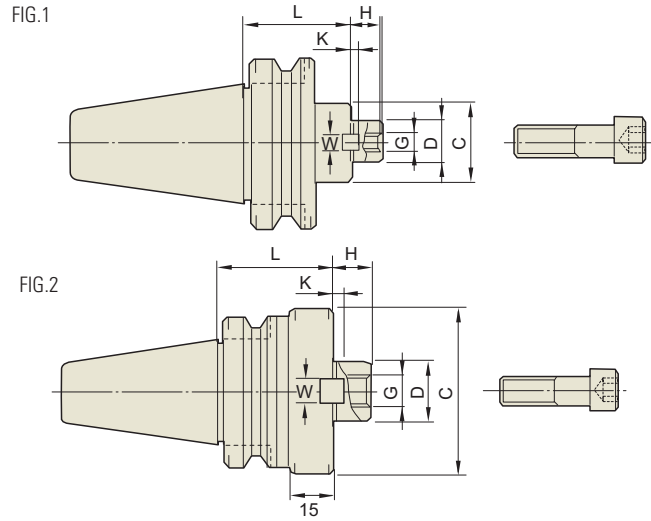
Hydraulic Chuck  
Shrink Fit Holder  
ER Collet Chuck  
End Mill Holder & Side Lock Arbor  
Shell Mill Arbor  
Power Milling Chuck  
Morse Taper Arbor  
SK Slim Chuck  
Synchro Tapping Chuck  
Tapping ER Chuck  
Tapping Chuck  
Face Mill Arbor  
NC Drill Chuck & Other Tool Holders  
Boring System  
Accessory & Others

# FACE MILL ARBOR

SSK Supreme

FMC

AUFNAHMEDORN FÜR MESSERKÖPFE  
ARBRE PORTE FRAISE À ALÉSAGE  
MANDRINO PORTA FRESE FRONTALE  
EJE PARA PLATOS DE PLACAS



CBT	Taper Accuracy AT3	G Value 2.5	RPM 25,000	Coolant System A
-----	-----------------------	----------------	---------------	---------------------

## ■ CBT (BT DUAL CONTACT)

### ◆ METRIC TYPE

										Unit : mm
TAPER No.	MODEL No.	D	L	C	H	W	K	G	FIG.	WEIGHT (Kg)
30	CBT30-FMC22-45	22	45	45	18	10	5	M10	2	0.80
40	CBT40-FMC22-45	22	45	45	18	10	5	M10	1	1.30
	CBT40-FMC27-60	27	60	70	20	12	6	M12	2	1.50
50	CBT40-FMC32-60	32	60	85	22	14	7	M16	2	2.30
	CBT50-FMC22-60	22	60	45	18	10	5	M10	1	4.20
	CBT50-FMC22-105	22	105	45	18	10	5	M10	1	4.70
	CBT50-FMC22-150	22	150	45	18	10	5	M10	1	5.30
	CBT50-FMC27-45	27	45	70	20	12	6	M12	1	4.10
	CBT50-FMC27-90	27	90	70	20	12	6	M12	1	5.50
	CBT50-FMC27-150	27	150	70	20	12	6	M12	1	7.30
	CBT50-FMC32-60	32	60	85	22	14	7	M16	1	4.20
	CBT50-FMC32-105	32	105	85	22	14	7	M16	1	5.50
	CBT50-FMC32-150	32	150	85	22	14	7	M16	1	7.00

### ◆ INCH TYPE

										Unit : mm
TAPER No.	MODEL No.	D	L	C	H	W	K	G	FIG.	WEIGHT (Kg)
30	CBT30-FMC25.4-45	25.4	45	70	20	9.5	6	M12	2	1.10
40	CBT40-FMC25.4-60	25.4	60	70	20	9.5	6	M12	2	1.50
	CBT40-FMC25.4-90	25.4	90	70	20	9.5	6	M12	2	2.20
	CBT40-FMC38.1-60	38.1	60	85	22	15.9	7	M16	2	2.30
	CBT40-FMC38.1-75	38.1	75	85	22	15.9	7	M16	2	2.60
50	CBT50-FMC25.4-45	25.4	45	70	20	9.5	6	M12	1	4.10
	CBT50-FMC25.4-90	25.4	90	70	20	9.5	6	M12	1	5.50
	CBT50-FMC25.4-150	25.4	150	70	20	9.5	6	M12	1	7.30
	CBT50-FMC38.1-45	38.1	45	85	22	15.9	7	M16	1	4.20
	CBT50-FMC38.1-75	38.1	75	85	22	15.9	7	M16	1	5.50
	CBT50-FMC38.1-105	38.1	105	85	22	15.9	7	M16	1	7.00

- ▶ Through coolant system is optional.
- ▶ For parts, please refer to page 207.



# FACE MILL ARBOR

SSK **POP**

**FMC**

AUFNAHMEDORN FÜR MESSERKÖPFE  
ARBRE PORTE FRAISE À ALÉSAGE  
MANDRINO PORTA FRESE FRONTALE  
EJE PARA PLATOS DE PLACAS



FIG.1

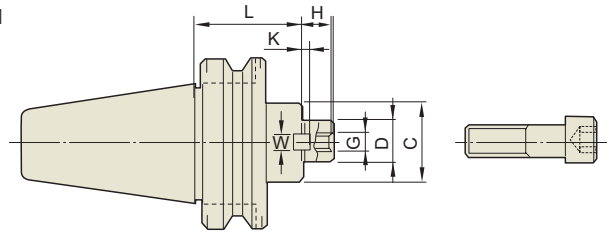
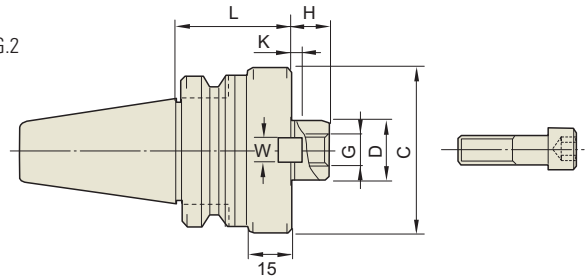


FIG.2



JIS B6339 -BT	Taper Accuracy AT3	G Value 6.3	RPM 15,000	Coolant System A
------------------	--------------------------	----------------	---------------	------------------------

## ■ JIS B6339/MAS 403-BT

### ◆ METRIC TYPE

Unit : mm

TAPER No.	MODEL No.	D	L	C	H	W	K	G	FIG.	WEIGHT (Kg)
30	BT30-FMC22-45	22	45	45	18	10	5	M10	2	0.80
40	BT40-FMC22-45	22	45	45	18	10	5	M10	1	1.30
	BT40-FMC27-60	27	60	70	20	12	6	M12	2	1.50
	BT40-FMC32-60	32	60	85	22	14	7	M16	2	2.30
50	BT50-FMC22-60	22	60	45	18	10	5	M10	1	4.20
	BT50-FMC22-105	22	105	45	18	10	5	M10	1	4.70
	BT50-FMC22-150	22	150	45	18	10	5	M10	1	5.30
	BT50-FMC27-45	27	45	70	20	12	6	M12	1	4.10
	BT50-FMC27-90	27	90	70	20	12	6	M12	1	5.50
	BT50-FMC27-150	27	150	70	20	12	6	M12	1	7.30
	BT50-FMC32-60	32	60	85	22	14	7	M16	1	4.20
	BT50-FMC32-105	32	105	85	22	14	7	M16	1	5.50
	BT50-FMC32-150	32	150	85	22	14	7	M16	1	7.00

### ◆ INCH TYPE

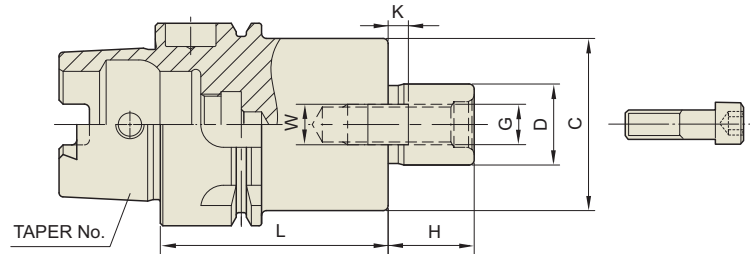
Unit : mm

TAPER No.	MODEL No.	D	L	C	H	W	K	G	FIG.	WEIGHT (Kg)
30	BT30-FMC25.4-45	25.4	45	70	20	9.5	6	M12	2	1.10
40	BT40-FMC25.4-60	25.4	60	70	20	9.5	6	M12	2	1.50
	BT40-FMC25.4-90	25.4	90	70	20	9.5	6	M12	2	2.20
	BT40-FMC38.1-60	38.1	60	85	22	15.9	7	M16	2	2.30
	BT40-FMC38.1-75	38.1	75	85	22	15.9	7	M16	2	2.60
50	BT50-FMC25.4-45	25.4	45	70	20	9.5	6	M12	1	4.10
	BT50-FMC25.4-90	25.4	90	70	20	9.5	6	M12	1	5.50
	BT50-FMC25.4-150	25.4	150	70	20	9.5	6	M12	1	7.30
	BT50-FMC38.1-45	38.1	45	85	22	15.9	7	M16	1	4.20
	BT50-FMC38.1-75	38.1	75	85	22	15.9	7	M16	1	5.50
	BT50-FMC38.1-105	38.1	105	85	22	15.9	7	M16	1	7.00

- ▶ Through coolant system is optional.
- ▶ CAT(ANSI B5.50) taper and Inch type products are available.
- ▶ For parts, please refer to page 207.

# FACE MILL ARBOR

AUFNAHMEDORN FÜR MESSERKÖPFE  
ARBRE PORTE FRAISE À ALÉSAGE  
MANDRINO PORTA FRESE FRONTALE  
EJE PARA PLATOS DE PLACAS



## ■ DIN 69893/ISO 12164-1-HSK FORM A

DIN 69893  
- HSKTaper  
Accuracy  
-G Value  
6.3RPM  
15,000Coolant  
System  
A

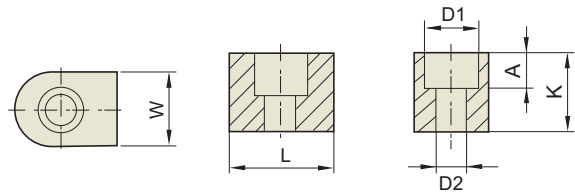
Unit : mm

TAPER No.	MODEL No.	D	C	L	H	W	K	G	WEIGHT (Kg)
40A	HSK40A-FMC16-45	16	34	45	17	8	4	M8	0.40
	HSK40A-FMC22-50	22	45	50	18	10	5	M10	0.50
	HSK40A-FMC27-60	27	68	60	20	12	7	M12	0.70
50A	HSK50A-FMC16-40	16	34	40	17	8	4	M8	
	HSK50A-FMC22-50	22	45	50	18	10	5	M10	
	HSK50A-FMC27-60	27	70	60	20	12	6	M12	
63A	HSK63A-FMC22-45	22	45	45	18	10	5	M10	
	HSK63A-FMC27-60	27	70	60	20	12	6	M12	
	HSK63A-FMC32-60	32	85	60	22	14	7	M16	
100A	HSK100A-FMC22-50	22	45	50	18	10	5	M10	
	HSK100A-FMC27-60	27	70	60	20	12	6	M12	
	HSK100A-FMC32-60	32	85	60	22	14	7	M16	

- ▶ Through coolant system is optional.
- ▶ For parts, please refer to page 207.

# KEY & BOLT (For FACE MILL ARBOR)

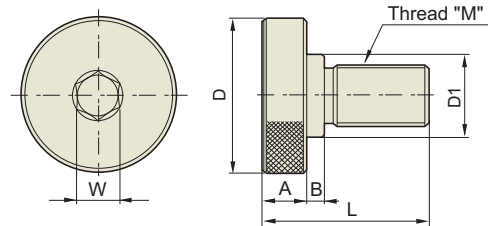
# PART



## ■ KEY

Unit : mm

KEY	W	K	L	D1	D2	A	APPLICABLE ARBOR
8×7×12.8	8	7	12.8	5.8	3.2	3.2	SMA16
10×7.8×15.5	10	7.8	15.5	7.5	4.2	4.3	SMA22
9.52×9.52×10.2	9.52	9.52	10.2	7.5	4.5	5.2	FMA25.4 / FMB25.4
9.5×12×11	9.5	12	11	7.5	4.2	5	FMC25.4
12×9×18.5	12	9	18.5	9	5.3	5.5	SMA27
10×10×11	10	10	11	7.5	4.2	5	FMC22
14×11.5×20.5	14	11.5	20.5	10.5	6.5	6.5	SMA32
12×13×18	12	13	18	9	5.3	8	FMB27 / FMC27
16×13.5×23.5	16	13.5	23.5	10.5	6.5	6.5	SMA40
12.7×12.7×12.7	12.7	12.7	12.7	7.5	4.5	5.2	FMA31.75
15.87×15.87×18.5	15.87	15.87	18.5	10.3	6.6	7.5	FMA38.1 / FMB40 / FMB40F
14×15×20	14	15	20	10.5	6.3	8	FMC32
18×18×28.5	18	18	28.5	10.5	6.5	10	SMA50
19×18×22	19	18	22	10.5	6.3	7	FMA50.8



## ■ MOUNTING BOLT

Unit : mm

MOUNTING BOLT	M	D	D1	L	A	B	W	APPLICABLE ARBOR
MB8	8×1.25	20	15	23	7	2	6	FMC16
MB10	10×1.5	28	18	29	9	2	8	FMC22
MB12	12×1.75	33	23	32	10	2	10	FMC27 / FMB27 / FMA25.4
MB16	16×2.0	40	23	42	10	6	12	FMC32 / FMA31.75
MB20	20×2.5	50	27	54	14	6	14	FMC40 / FMA38.1 / FMB40 / FMB40F
MB24	24×3.0	65	37	62	14	10	17	FMA50.8

Hydraulic Chuck  
Shrink Fit Holder  
ER Collet Chuck  
End Mill Holder & Side Lock Arbor  
Shell Mill Arbor  
Power Milling Chuck  
Morse Taper Arbor  
SK Slim Chuck  
Synchro Tapping Chuck  
Tapping ER Chuck  
Tapping Chuck  
Face Mill Arbor  
NC Drill Chuck & Other Tool Holders  
Boring System  
Accessory & Others