

SSK TOOLING SYSTEM

# NC DRILL CHUCK & OTHER TOOL HOLDERS

- NC - BOHRFUTTER UND ANDERE WERKZEUGHALTER
- MANDRIN DE PERÇAGE NC ET D'AUTRES PORTE-OUTIL
- NC MANDRINI PORTA PUNTE E ALTRI PORTAUTENSILI
- PORTABROCAS PARA BROCAS NC Y OTRA PORTAHERRAMIENTAS



## NC DRILL CHUCK

CBT (BT DUAL CONTACT)

JIS B6339/MAS 403-BT

DIN 69893/ISO 12164-1-HSK

STRAIGHT-K

## SIDE CUTTER ARBOR

JIS B6339/MAS 403-BT

STRAIGHT-K

## JACOBS TAPER ADAPTER

JIS B6339/MAS 403-BT

## BLANK BAR

DIN 69893/ISO 12164-1-HSK FORM A

JIS B6339/MAS 403-BT

**SSK**

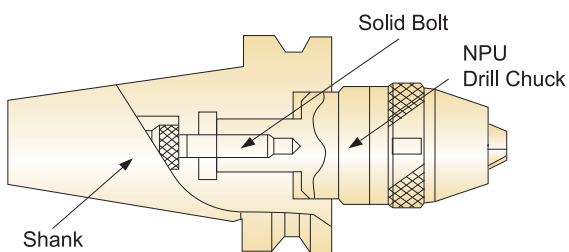
# NC DRILL CHUCK



## FEATURE

SSK Drill Chuck is completely tightened with solid bolt, and there is no danger of falling during rotating or cutting.

## HIGH PRECISION



- Drill chuck with excellent high precision (T.I.R 0.05) and shank are integrated, which guarantees excellent T.I.R

## Strong Chucking Power

Drill may be damaged due to reverse thrust during perforation, but with SSK Drill Chuck strongly tightened with wrench, there is no possibility of damage to drill.

## Safety

SSK NC Drill Chuck with strong rigidity contributes to factory automation by unmanned operation by preventing accident from occurring during operation.

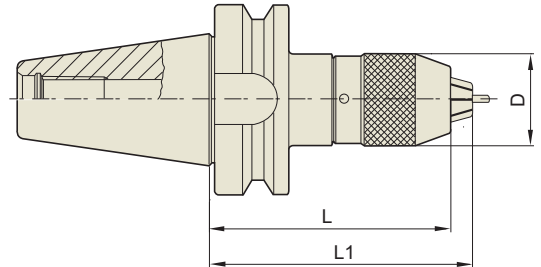
- Falling of drill occurring by sudden stopping
- Falling of drill occurring by rapid rotation
- Damage to drill caused by reverse thrust during perforation process

# NC DRILL CHUCK

SSK **Supreme**

**NPU**

NC - BOHRFUTTER  
MANDRIN DE PERÇAGE NC  
NC MANDRINI PORTA PUNTE  
PORTABROCAS PARA BROCAS NC



## ■ CBT (BT DUAL CONTACT)

CBT	Taper Accuracy AT3	G Value -	RPM -	Coolant System A
-----	-----------------------	--------------	----------	---------------------

Unit : mm

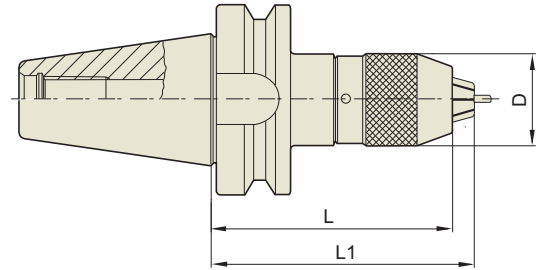
TAPER No.	MODEL No.	CLAMPING RANGE	D	L (Min.)	L1 (Max.)	WEIGHT (Kg)
30	CBT30-NPU8-75	0.3 - 8	36.5	75	80.7	0.80
	CBT30-NPU13-105	1 - 13	50.4	105	115	1.80
40	CBT40-NPU8-80	0.3 - 8	36.5	80	85.7	1.50
	CBT40-NPU8-110	0.3 - 8	36.5	110	115.7	1.80
	CBT40-NPU8-150	0.3 - 8	36.5	150	155.7	2.60
	CBT40-NPU13-95	1 - 13	50.4	95	100.7	2.10
	CBT40-NPU13-130	1 - 13	50.4	130	140	2.70
	CBT40-NPU13-150	1 - 13	50.4	150	160	3.40
50	CBT50-NPU8-90	0.3 - 8	36.5	90	95.7	4.20
	CBT50-NPU8-110	0.3 - 8	36.5	110	115.7	4.50
	CBT50-NPU8-170	0.3 - 8	36.5	170	180.7	5.20
	CBT50-NPU13-105	1 - 13	50.4	105	115	4.80
	CBT50-NPU13-130	1 - 13	50.4	130	140	5.20
	CBT50-NPU13-150	1 - 13	50.4	150	160	5.50
	CBT50-NPU13-190	1 - 13	50.4	190	200	5.90

▶ SK(DIN 69871) and CAT(ANSI B5.50) taper products available.

Hydraulic Chuck  
Shrink Fit Holder  
ER Collet Chuck  
End Mill Holder & Side Lock Arbor  
Shell Mill Arbor  
Power Milling Chuck  
Morse Taper Arbor  
SK Slim Chuck  
Synchro Tapping Chuck  
Tapping ER Chuck  
Tapping Chuck  
Face Mill Arbor  
NC Drill Chuck & Other Tool Holders  
Boring System  
Accessory & Others

# NC DRILL CHUCK

NC - BOHRFUTTER  
MANDRIN DE PERÇAGE NC  
NC MANDRINI PORTA PUNTE  
PORTABROCAS PARA BROCAS NC



JIS B6339  
-BT

Taper  
Accuracy  
AT3

G Value  
-

RPM  
-

Coolant  
System  
A

## ■ JIS B6339/MAS403-BT

Unit : mm

TAPER No.	MODEL No.	CLAMPING RANGE	D	L (Min.)	L1 (Max.)	WEIGHT (Kg)
30	BT30-NPU8-75	0.3 - 8	36.5	75	80.7	0.80
	BT30-NPU13-105	1 - 13	50.4	105	115	1.80
40	BT40-NPU8-80	0.3 - 8	36.5	80	85.7	1.50
	BT40-NPU8-110	0.3 - 8	36.5	110	115.7	1.80
	BT40-NPU8-150	0.3 - 8	36.5	150	155.7	2.60
	BT40-NPU13-95	1 - 13	50.4	95	100.7	2.10
	BT40-NPU13-130	1 - 13	50.4	130	140	2.70
	BT40-NPU13-150	1 - 13	50.4	150	160	3.40
50	BT50-NPU8-90	0.3 - 8	36.5	90	95.7	4.20
	BT50-NPU8-110	0.3 - 8	36.5	110	115.7	4.50
	BT50-NPU8-170	0.3 - 8	36.5	170	180.7	5.20
	BT50-NPU13-105	1 - 13	50.4	105	115	4.80
	BT50-NPU13-130	1 - 13	50.4	130	140	5.20
	BT50-NPU13-150	1 - 13	50.4	150	160	5.50
	BT50-NPU13-190	1 - 13	50.4	190	200	5.90

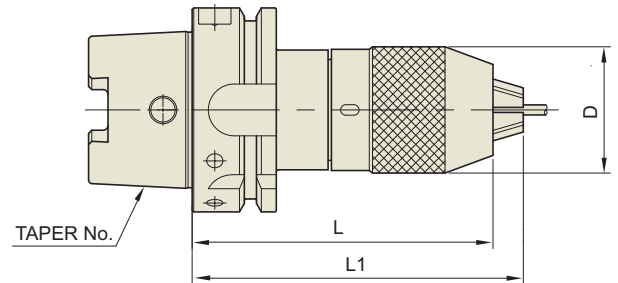
▶ SK(DIN 69871) and CAT(ANSI B5.50) taper products available.

# NC DRILL CHUCK

SSK **POP**

**NPU**

NC - BOHRFUTTER  
 MANDRIN DE PERÇAGE NC  
 NC MANDRINI PORTA PUNTE  
 PORTABROCAS PARA BROCAS NC



DIN 69893  
- HSK

Taper Accuracy  
-

G Value  
-

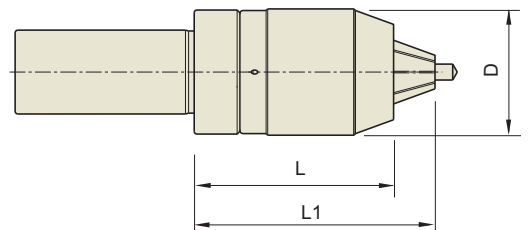
RPM  
-

Coolant System  
**A**

## ■ DIN 69893/ISO 12164-1-HSK FORM A

Unit : mm

TAPER No.	MODEL No.	CAPACITY	D	L (Min.)	L1 (Max.)	WEIGHT (Kg)
40A	HSK40A-NPU 8-120	0.3 - 8	36.5	120	125.7	1.00
50A	HSK50A-NPU 8-120	0.3 - 8	36.5	120	125.7	1.20
	HSK50A-NPU13-150	1 - 13	50.4	150	160	2.10
63A	HSK63A-NPU 8-125	0.3 - 8	36.5	125	130.7	2.10
	HSK63A-NPU13-150	1 - 13	50.4	150	150	3.00
100A	HSK100A-NPU 8-130	0.3 - 8	36.5	130	135.7	4.80
	HSK100A-NPU13-150	1 - 13	50.4	150	160	5.50



## ■ STRAIGHT-K

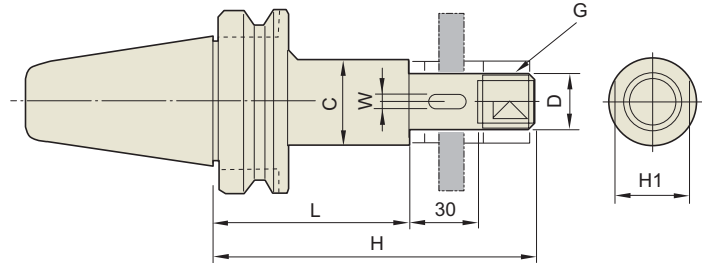
Unit : mm

TAPER No.	MODEL No.	CLAMPING RANGE	D	L (Min.)	L1 (Max.)	d	WEIGHT (Kg)
32	K32-NPU8-75	0.3 - 8	36.5	75	80.7	32	0.70
	K32-NPU13-100	1 - 13	50.4	100	110	32	1.50
42	K42-NPU8-70	0.3 - 8	36.5	70	75.7	42	0.80
	K42-NPU13-100	1 - 13	50.4	100	110	42	1.60

Hydraulic Chuck  
 Shrink Fit Holder  
 ER Collet Chuck  
 End Mill Holder & Side Lock Arbor  
 Shell Mill Arbor  
 Power Milling Chuck  
 Morse Taper Arbor  
 SK Slim Chuck  
 Synchro Tapping Chuck  
 Tapping ER Chuck  
 Tapping Chuck  
 Face Mill Arbor  
 NC Drill Chuck & Other Tool Holders  
 Boring System  
 Accessory & Others

# SIDE CUTTER ARBOR

SEITENSCHNEIDER LAUBE  
 TONNELLE PINCE COUPANTE  
 LATO CUTTER PERGOLATO  
 LADO DEL EJE DE CORTE



JIS B6339 -BT	Taper Accuracy AT3	G Value -	RPM -	Coolant System A
------------------	--------------------------	--------------	----------	------------------------

## ■ JIS B6339/MAS 403-BT

Unit : mm

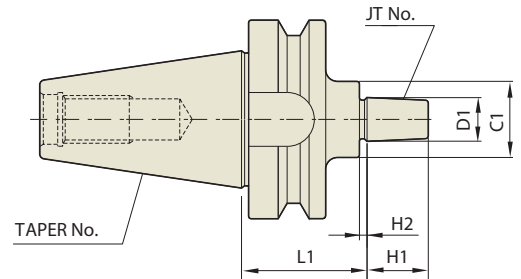
TAPER No.	MODEL No.	H	H1	C	W	G	D	L	WEIGHT (Kg)
30	BT30-SCA12.7-60	105	17	20	-	M12	12.7	60	1.00
	BT30-SCA15.875-60	106	23	26	3.18	M14	15.875	60	1.10
	BT30-SCA22.225-60	110	29	34	3.18	M20	22.225	60	1.20
	BT30-SCA25.4-60	115	32	40	6.35	M24	25.4	60	1.30
40	BT40-SCA12.7-75	120	17	20	-	M12	12.7	75	1.20
	BT40-SCA12.7-105	150	17	20	-	M12	12.7	105	1.30
	BT40-SCA15.875-75	121	23	26	3.18	M14	15.875	75	1.40
	BT40-SCA15.875-120	151	23	26	3.18	M14	15.875	120	1.50
	BT40-SCA22.225-75	126	29	34	3.18	M20	22.225	75	1.70
	BT40-SCA22.225-120	171	29	34	3.18	M20	22.225	120	2.00
	BT40-SCA25.4-75	130	32	40	6.35	M24	25.4	75	2.00
	BT40-SCA25.4-120	175	32	40	6.35	M24	25.4	120	2.40
	BT40-SCA31.75-90	150	41	46	7.92	M30	31.75	90	2.60
	BT50-SCA12.7-75	120	17	20	-	M12	12.7	75	4.10
50	BT50-SCA12.7-105	150	17	20	-	M12	12.7	105	4.20
	BT50-SCA15.875-90	136	23	26	3.18	M14	15.875	90	4.20
	BT50-SCA15.875-120	166	23	26	3.18	M14	15.875	120	4.20
	BT50-SCA22.225-90	144	29	34	3.18	M20	22.225	90	4.40
	BT50-SCA22.225-135	186	29	34	3.18	M20	22.225	135	4.70
	BT50-SCA25.4-90	145	32	40	6.35	M24	25.4	90	4.50
	BT50-SCA25.4-135	190	32	40	6.35	M24	25.4	135	4.90
	BT50-SCA31.75-90	150	41	46	7.92	M30	31.75	90	4.70
	BT50-SCA31.75-135	195	41	46	7.92	M30	31.75	135	5.20
	BT50-SCA38.1-90	156	46	55	9.52	M36	38.1	90	4.90
BT50-SCA38.1-135	201	46	55	9.52	M36	38.1	135	5.90	

# JACOBS TAPER ADAPTER

SSK **POP**

**JTA**

JACOBS KEGELZAPFEN ADAPTER  
 JACOBS ADAPTEUR DE CÔNE  
 JACOBS ADATTATORE DEL CONO  
 JACOBS ADAPTADOR DE LA FORMA CONICA



JIS B6339 -BT	Taper Accuracy AT3	G Value -	RPM -	Coolant System A
------------------	--------------------------	--------------	----------	------------------------

## ■ JIS B6339/MAS 403-BT

Unit : mm

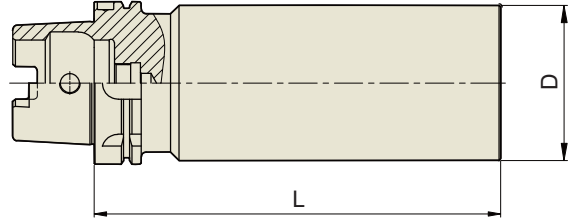
TAPER No.	MODEL No.	JT No.	D1	L1	H1	H2	C1	WEIGHT (Kg)
30	BT30-JTA1-45	1	9.754	45	14	3	30	0.90
	BT30-JTA2-45	2	14.199	45	20	4	30	1.00
	BT30-JTA6-45	6	17.17	45	24	4	30	1.00
40	BT40-JTA1-45	1	9.754	45	14	3	30	1.10
	BT40-JTA1-90	1	9.754	90	14	3	30	1.10
	BT40-JTA2S-45	2(SHORT)	13.94	45	18	3	30	1.40
	BT40-JTA2S-90	2(SHORT)	13.94	90	18	3	30	1.40
	BT40-JTA2-45	2	14.199	45	20	4	30	1.10
	BT40-JTA2-90	2	14.199	90	20	4	30	1.40
	BT40-JTA33-45	33	15.85	45	24	4	30	1.10
	BT40-JTA33-90	33	15.85	90	24	4	30	1.40
	BT40-JTA6-45	6	17.17	45	24	4	30	1.10
	BT40-JTA6-90	6	17.17	90	24	4	30	1.40
	BT40-JTA3-45	3	20.599	45	28	5	35	1.20
	BT40-JTA3-90	3	20.599	90	28	5	35	1.50
50	BT50-JTA1-45	1	9.754	45	14	3	30	4.00
	BT50-JTA1-105	1	9.754	105	14	3	30	4.40
	BT50-JTA2S-45	2(SHORT)	13.94	45	18	3	30	4.00
	BT50-JTA2S-105	2(SHORT)	13.94	105	18	3	30	4.40
	BT50-JTA2-45	2	14.199	45	20	4	30	4.00
	BT50-JTA2-105	2	14.199	105	20	4	30	4.40
	BT50-JTA33-45	33	15.85	45	24	4	30	4.00
	BT50-JTA33-105	33	15.85	105	24	4	30	4.40
	BT50-JTA6-45	6	17.17	45	24	4	30	4.00
	BT50-JTA6-105	6	17.17	105	24	4	30	4.40
	BT50-JTA3-45	3	20.599	45	28	5	35	4.00
	BT50-JTA3-105	3	20.599	105	28	5	35	4.60

▶ CAT(ANSI B5.50) taper and Inch type products are available.

Hydraulic Chuck  
 Shrink Fit Holder  
 ER Collet Chuck  
 End Mill Holder & Side Lock Arbor  
 Shell Mill Arbor  
 Power Milling Chuck  
 Morse Taper Arbor  
 SK Slim Chuck  
 Synchro Tapping Chuck  
 Tapping ER Chuck  
 Tapping Chuck  
 Face Mill Arbor  
 NC Drill Chuck & Other Tool Holders  
 Boring System  
 Accessory & Others

# BLANK BAR

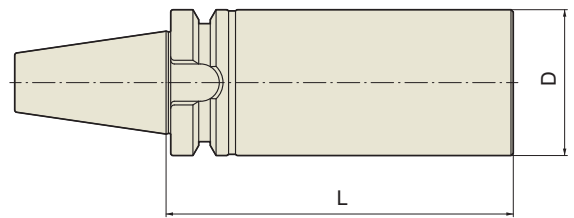
**BL**



## ■ DIN 69893/ISO 12164-1-HSK FORM A

Unit : mm

TAPER No.	MODEL No.	D	L
HSK40	HSK40A-BL42-180	42	180
HSK50	HSK50A-BL52-200	52	200
HSK63	HSK63A-BL63-150	63	150
HSK63	HSK63A-BL63-250	63	250
HSK63	HSK63A-BL82-200	82	200
HSK100	HSK100A-BL102-150	102	150
HSK100	HSK100A-BL102-250	102	250
HSK100	HSK100A-BL126-200	126	200



## ■ JIS B6339/MAS 403-BT

Unit : mm

TAPER No.	MODEL No.	D	L
BT30	BT30-BL48-180	48	180
BT40	BT40-BL63-150	63	150
BT40	BT40-BL63-250	63	250
BT40	BT40-BL82-200	82	200
BT50	BT50-BL102-150	102	150
BT50	BT50-BL102-250	102	250
BT50	BT50-BL126-200	126	200